

Visual Approach Chart

PIRINEUS - ANDORRA

La Seu d'Urgell

LESU

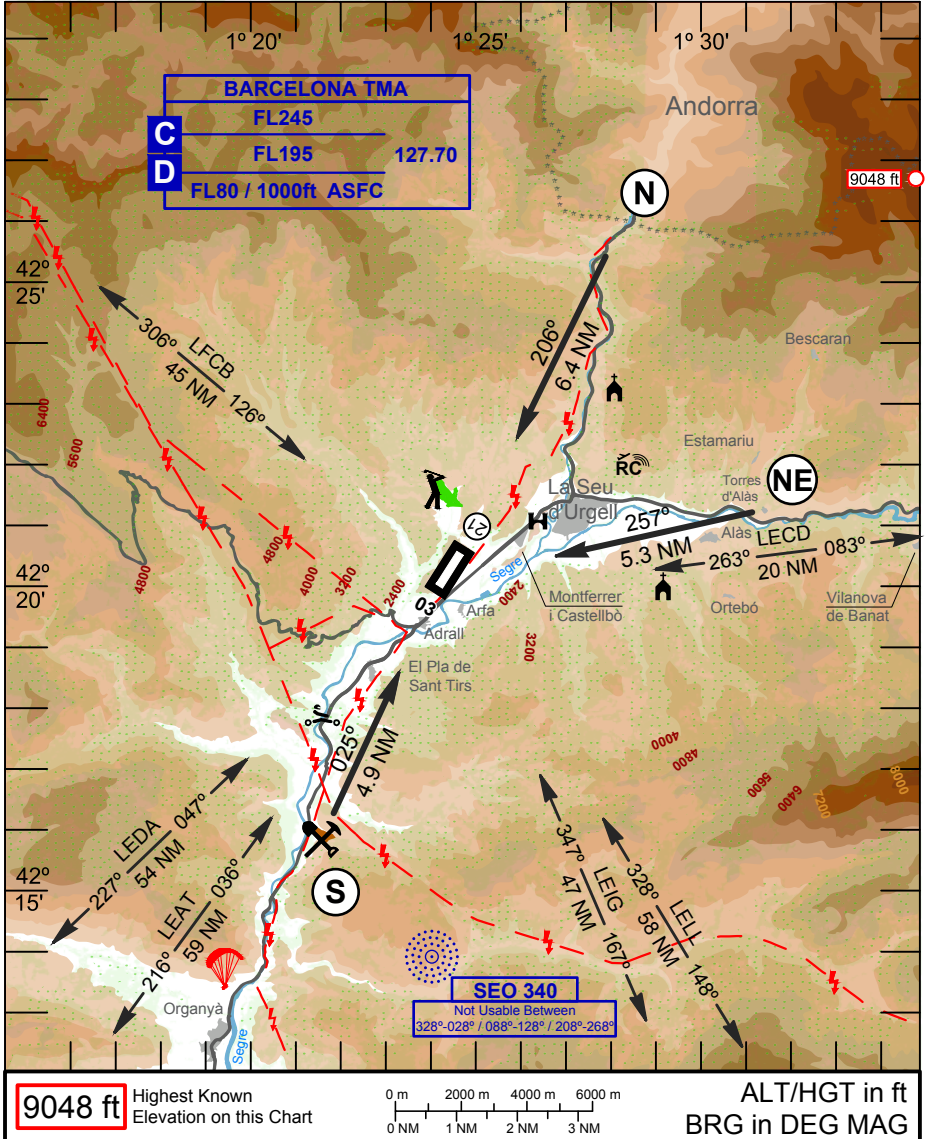
AD ELEV: 2628 ft

LAT: N42° 20' 46.35"

LON: E1° 24' 53.09"

VAR: W0.35° (2010)

A/A: 122.20 MHz



CHG: NIL

© 2011

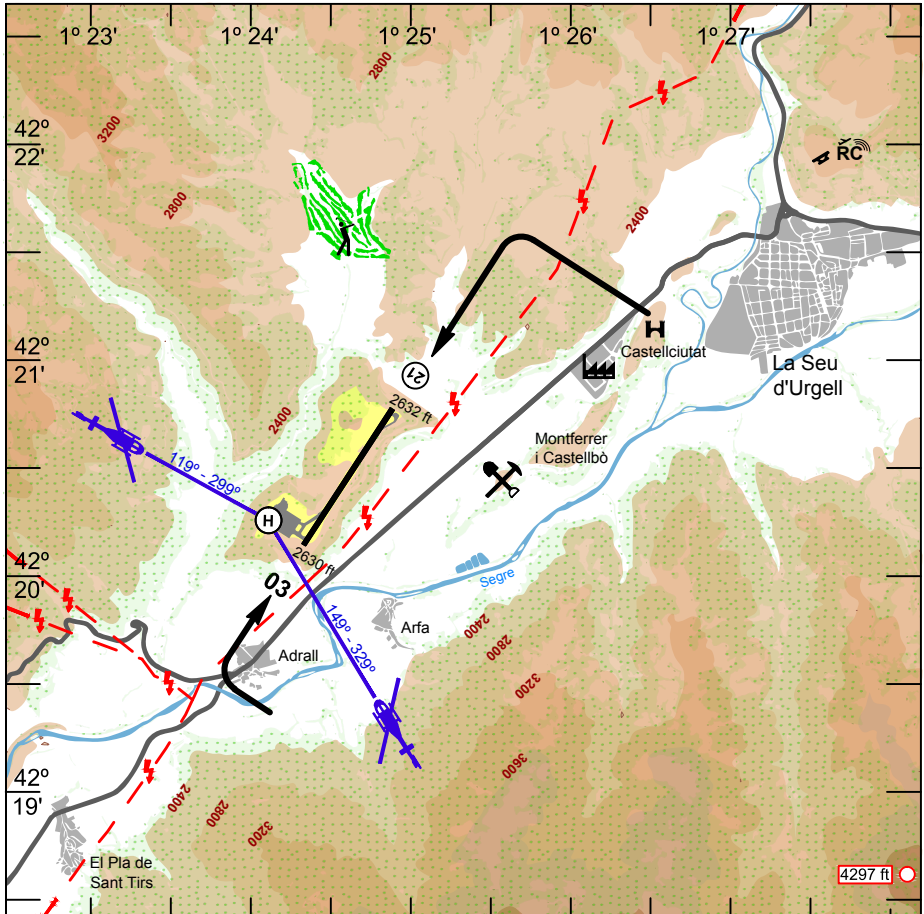
Visual Landing Chart

PIRINEUS - ANDORRA

AD ELEV: 2628 ft

A/A: 122.20 MHz

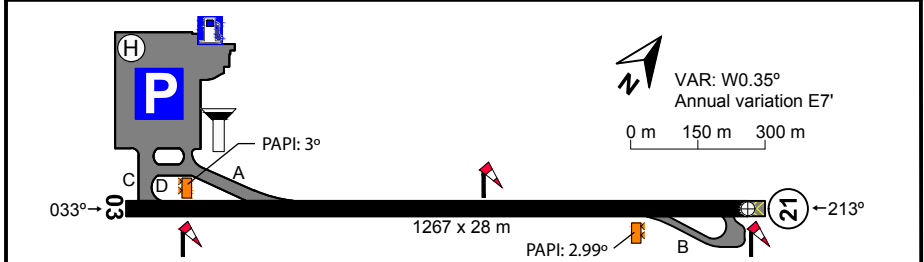
La Seu d'Urgell



4297 ft Highest Known Elevation on this Chart

0 m 1000 m 2000 m
0 NM 1 NM

ALT/HGT in ft
BRG in DEG MAG



© 2011

CHG: NIL

AD-LESU-VLC-01

AMDT 01/2012



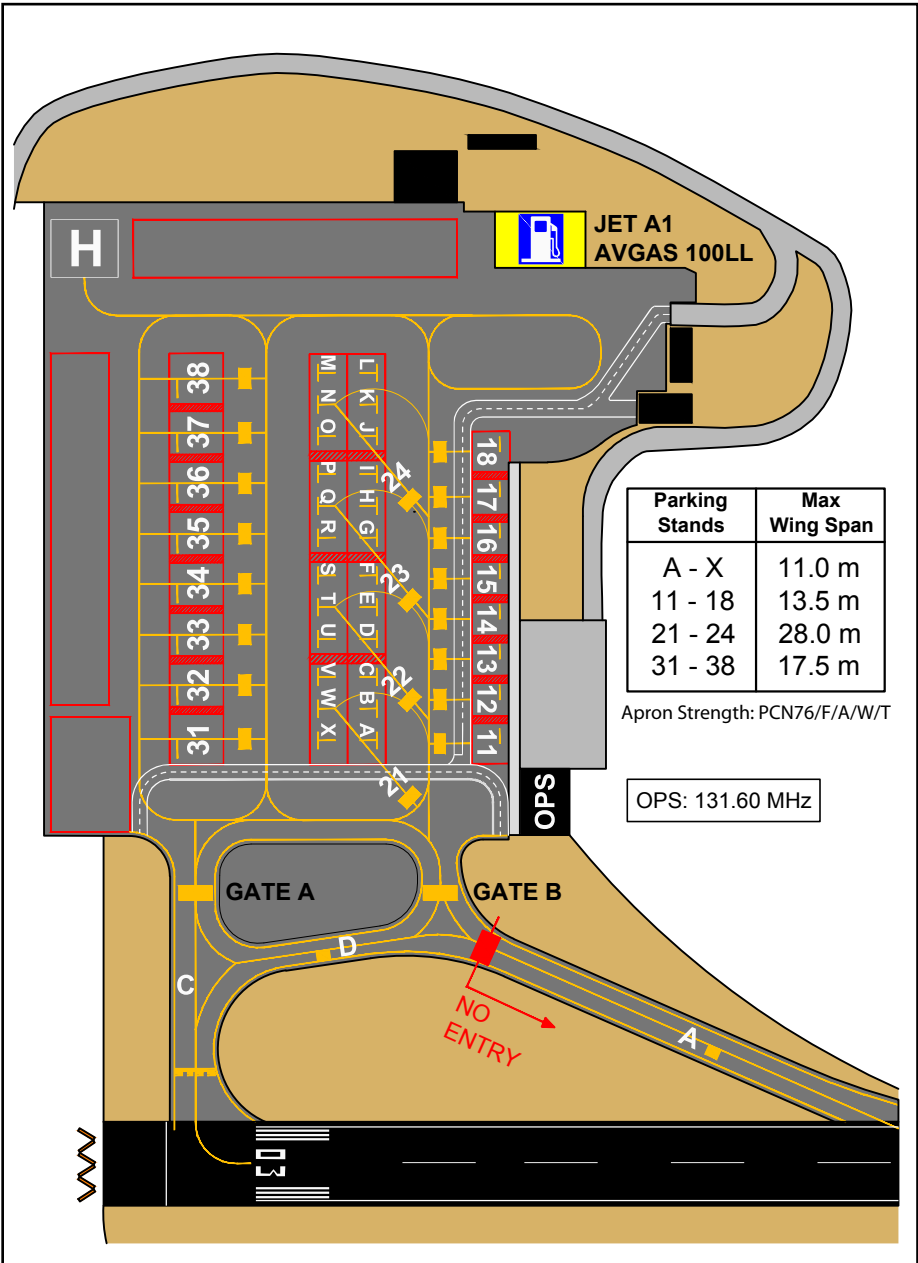
Aircraft Parking Chart

PIRINEUS - ANDORRA

AD ELEV: 2628 ft

A/A: 122.20 MHz

La Seu d'Urgell



Parking Stands	Max Wing Span
A - X	11.0 m
11 - 18	13.5 m
21 - 24	28.0 m
31 - 38	17.5 m

Apron Strength: PCN76/F/A/W/T

OPS: 131.60 MHz

CHG: NIL

© 2011



RWY	Dimensions	TORA	TODA	ASDA	LDA	Superf.	Strength	Lights
03	1267 x 28m	1267m	1327m	1267m	1267m	Asphalt paved	PCN 22/F/C/W/T	REIL
21								

Runway strip: 1387x80 m. Clearway: 60x150 m. T ref.: 31°C

Recommended Notification points

(NE)	N42°25'40" E001°27'53"	Town of <i>Torres d'Alàs</i>
(N)	N42°21'29" E001°31'35"	Hispano-Andorran border toll booths
(S)	N42°16'02" E001°21'32"	Quarry

Special instructions or procedures

Aircraft with destination LESU will proceed preferably from one of the recommended notification points, trying to avoid over-flying populated areas, to the airfield's vertical at a minimum altitude of 4000 ft AMSL. After a visual inspection of the landing conditions, they will integrate to a downwind leg of runways 03/31 or in a final approach path for the heliport.

Follow the river *Segre* in order to avoid overflying the populated areas during the downwind leg. Aerodrome traffic patterns at the NW of the runway are prohibited.

Approach:

- RWY 21: start the base leg after over-flying the north of the *Castellciutat* castle.
- RWY 03: perform the turn into final after over-passing the town of *Adrall*.

Take-off:

RWY 21: climb following the runway heading and do not turn left before over-passing the town of *Adrall*.

Additional procedures for direct operations to the heliport:

- Principal procedure: 119° (approach) – 299° (take-off)
- Secondary procedure: 329° (approach) – 149° (take-off)

It is recommended to contact with the OPS frequency (131.60 MHz) when arriving to a recommended notification point and/or after vacating the landing runway, in order to receive a parking assignment or to request a service (refuelling, etc.)

The entrance to the airport ramp is done through "GATE B" and the departure to the runway through "GATEA". Taxiway A is used only to exit from the runway.

The pilot has full responsibility to avoid collisions with other aircraft or obstacles when manoeuvring in the airport's apron, taxiways or runway.

**Air Navigation Hazards**

Airport located in a mountainous area.

Possible para-glider activity at the mountain slopes located at the NW of *Organyà* town. If moderate or strong wind, possible turbulence in final RWY21 and all along the runway due to the terrain elevation at the West of threshold RWY 21.



Medium and high bird strike hazard in all the airfield environment and specially in short final RWY21 (compost plan in the vicinity).

Airport Information

ATS: NIL

Night VFR: not approved

AIS/ARO: Contact with ARO *Lleida-Alguaire* (LEDA) or when beyond their operating hours with ARO *Reus* (LERS).

		
LEDA	+34 973 032 740/741	+34 973 032 768
LERS	+34 977 779 804/885	+34 977 779 810

Customs, police: NIL

Bird monitoring: NIL

Refuelling: JET A1 and AFGAS 100LL. Only in OPS hours.

Credit card (VISA) and cash.

Fire and rescue service: NIL.

Hangars for transient aircraft: NIL.

Aircraft maintenance services: NIL.

Airport operations (OPS) hours (local time):

Winter: 08h30 - 17h00 (Mo, Tu, We, Th) --- 8h30 - 18h00 (Fr, Sa, Su)

Summer: 08h30 - 18h00 (Mo, Tu, We, Th) --- 8h30 - 19h00 (Fr, Sa, Su)

June, July and August open every day until 20h30.

Airport's manager: Aeroports de Catalunya.

 +34 973 355 324  info@aeroportlaseu.cat  www.aeroportlaseu.cat

Miscellaneous Information

Airport located between *Ribera d'Urgellet* and *Montferrer i Castellbò* municipalities.

La Seu d'Urgell located at 3.8 km en from the airport.

Bus: NIL.

Taxi: different companies available at *La Seu d'Urgell*.

Airport's taxi stand  +34 973 35 10 21

Car rental: possible arrangement by contacting airport's managing authority.

Hotels and restaurants: at nearby towns.